

7.0

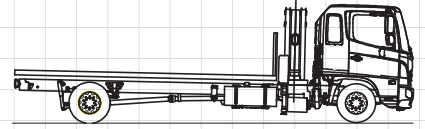
Tonne/Metre

4x2 Hino
500



MCLEOD

CRANES | HIABS | TRANSPORT
DRILLING RIG LOGISTICS
LIFT ENGINEERING & CONSULTANCY

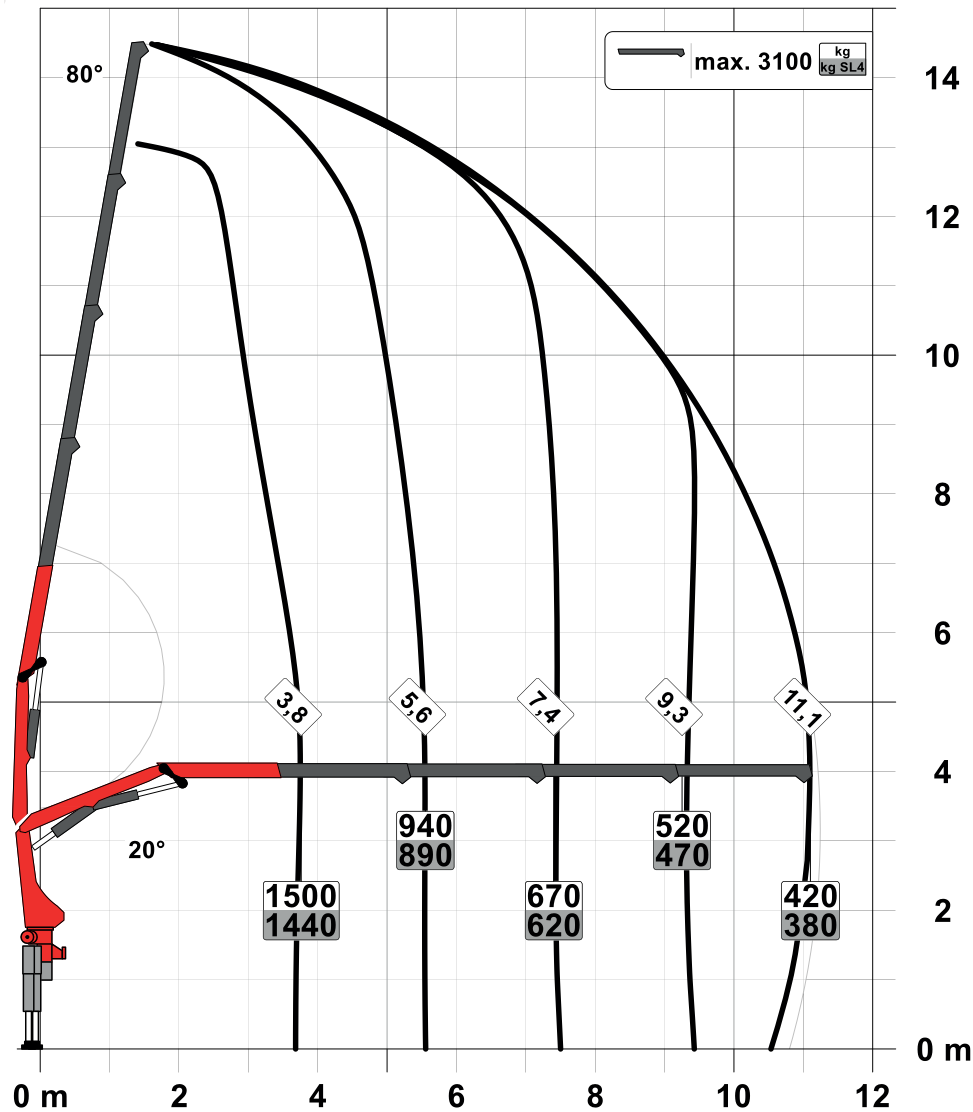


Palfinger PK7.001 SLD C

Platform: Hino 500
Deck Length: 5.3m
Maximum Payload: 4500 Kg
Maximum load length: 7.5m (2.2m unsupported)
Maximum load height: 3.2m

Maximum Lift: 1500 Kg @ 4m
Maximum reach (hydraulic): 800 Kg @ 7m
 420 Kg @ 11m

Palfinger Crane Load Chart



The charts that have been included have been reproduced from manufacturer specifications, and while every effort has been made to ensure their accuracy, we do not accept any responsibility for errors or omissions.

7.0

Tonne/Metre

4x2 Hino
500