

# 3.2 Tonne

Spider



# MCLEOD

CRANES | HIABS | TRANSPORT  
DRILLING RIG LOGISTICS  
LIFT ENGINEERING & CONSULTANCY

## Jekko SPX532

**Lift Capacity:** 3.2 Tonne  
**Boom Length:** 10.3 m  
**Fly Length:** 5.1 m

**Main Hook Weight:** 49 Kg  
**Aux Hook Weight:** 20 Kg  
**Line Pull:** 785 Kg

## 3.2 Tonne Rating Chart

		CRANE PERFORMANCE: J7									
L →		2,6	2,8	3,8	4,8	5,8	6,8	7,8	8,8	9,8	10,3
1		3,20	3,00	2,65	2,40	2,30	2,10	1,73	1,65	1,55	1,45
2		3,20	3,20	2,60	2,30	2,09	1,88	1,73	1,55	1,45	1,27
3				2,60	2,30	1,95	1,70	1,53	1,41	1,26	1,17
4					2,25	1,75	1,55	1,35	1,30	1,18	1,03
5						1,50	1,30	1,15	1,12	1,00	0,96
6							1,10	1,10	1,04	0,93	0,90
7								0,80	0,80	0,80	0,80
8									0,65	0,64	0,64
9										0,53	0,52
9,45*											0,50
↑R	[ton]										

LC532\_V100\_0719\_BP\_GANCIO\_J7

		CRANE PERFORMANCE: J6									
L →		2,6	2,8	3,8	4,8	5,8	6,8	7,8	8,8	9,8	10,3
1		3,20	3,00	2,65	2,40	2,30	2,10	1,73	1,65	1,55	1,45
2		3,20	3,20	2,60	2,30	2,09	1,88	1,73	1,55	1,45	1,27
3				2,60	2,30	1,95	1,70	1,53	1,41	1,26	1,17
4					1,70	1,65	1,50	1,35	1,30	1,18	1,03
5						1,10	1,10	1,10	1,00	1,00	0,96
6							0,80	0,80	0,80	0,80	0,80
7								0,60	0,60	0,60	0,60
8									0,48	0,48	0,48
9										0,40	0,40
9,45*											0,36
↑R	[ton]										

LC532\_V100\_0719\_BP\_GANCIO\_J6

There are a number of options and attachments for the Jekko SPX532  
Call us to discuss further.



The charts that have been included have been reproduced from manufacturer specifications, and while every effort has been made to ensure their accuracy, we do not accept any responsibility for errors or omissions.

**3.2 Tonne**  
Spider

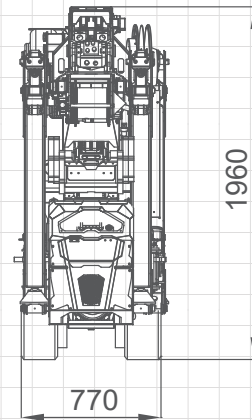
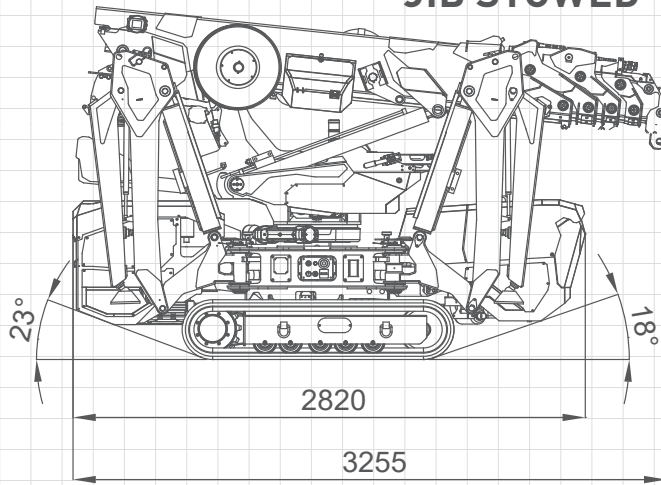
# 3.2

Tonne

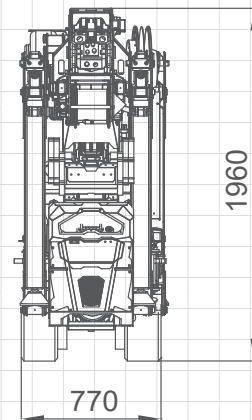
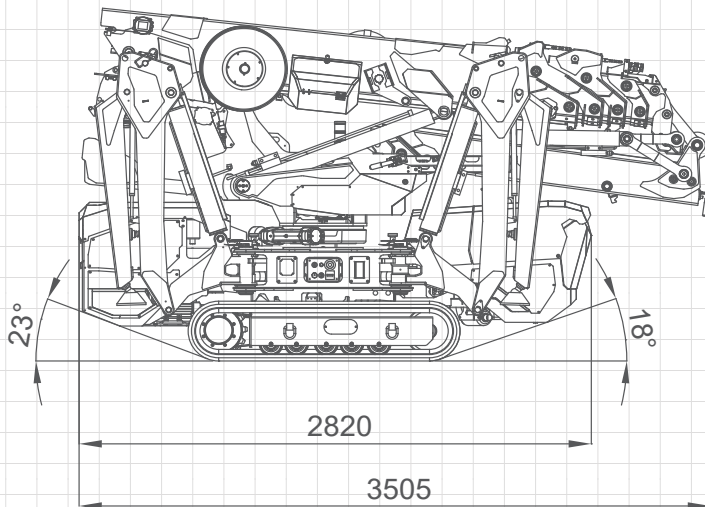
Spider

## 3.2 Tonne Jekko Dimensions

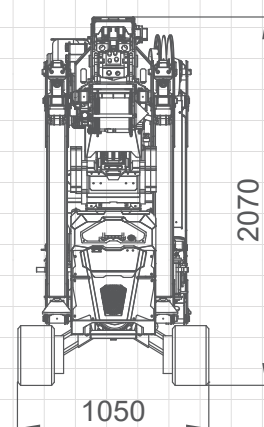
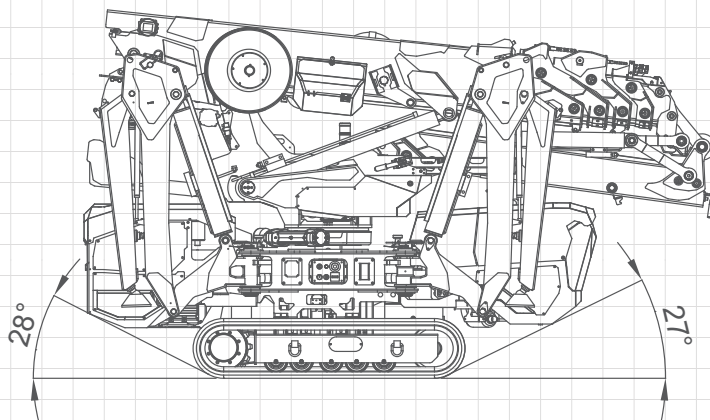
### JIB STOWED



### JIB MOUNTED



### EXTENDED TRACKS



**Safety first.  
McLeod first.**

# 3.2

Tonne

Spider

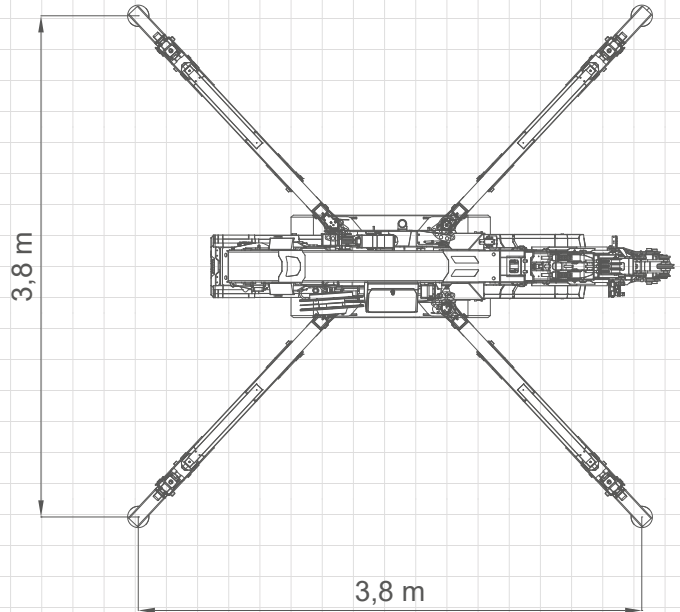
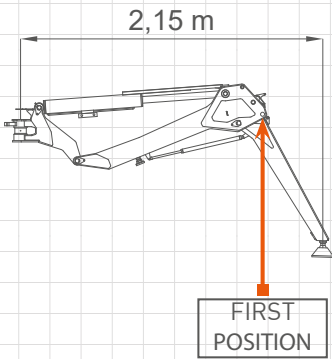
3.2

Tonne

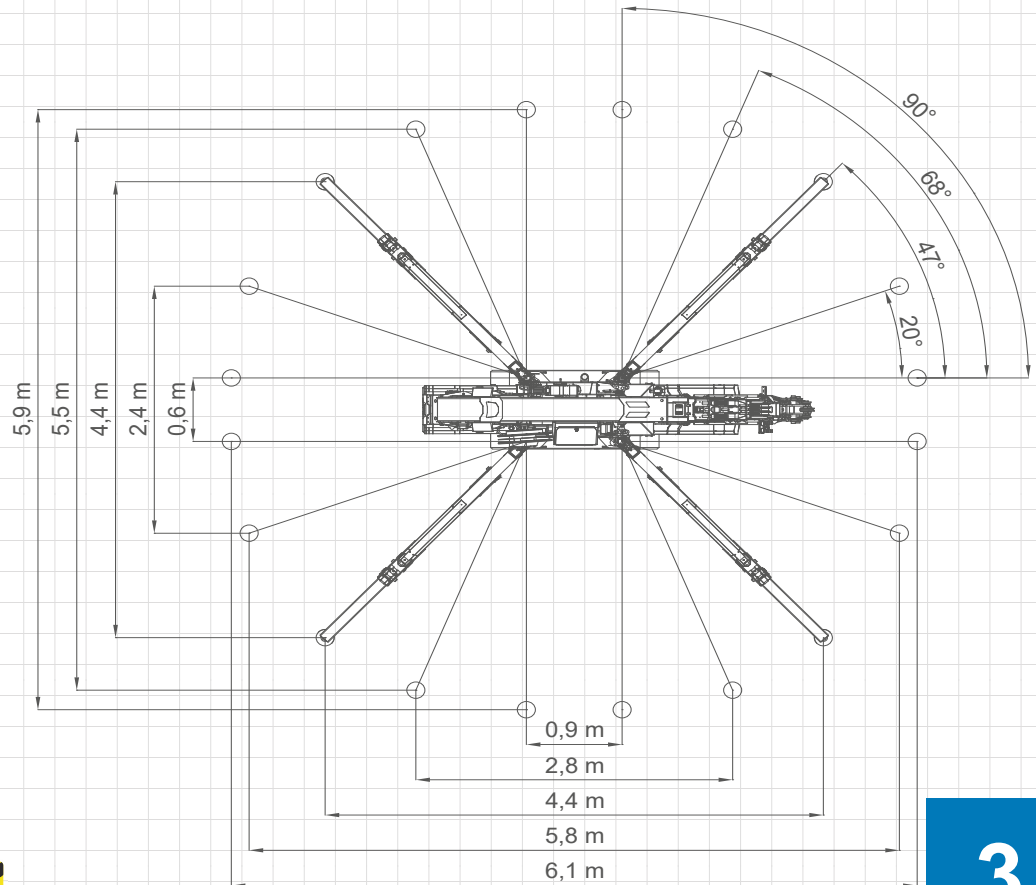
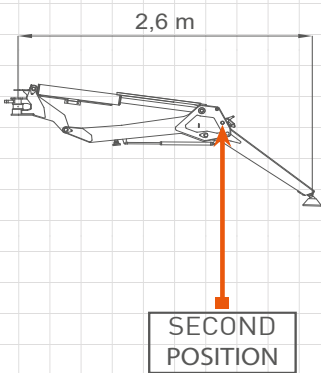
Spider

## 3.2 Tonne Jekko Stability

### SQUARE OUTFRIGGER 1<sup>ST</sup> POSITION STABILITY



### OUTRIGGER 2<sup>ND</sup> POSITION FULL STABILITY



**Safety first.  
McLeod first.**

3.2

Tonne

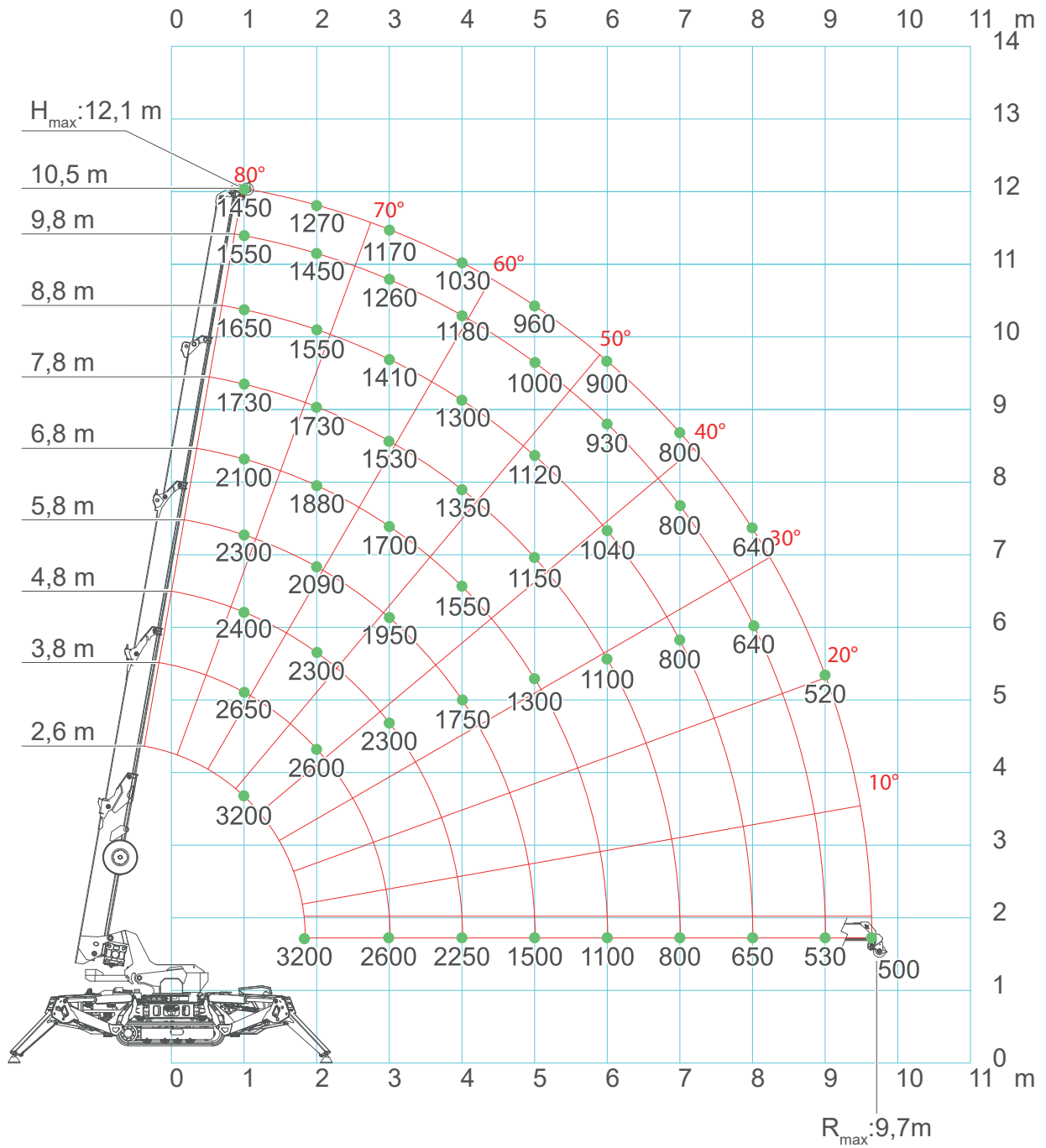
Spider

# 3.2

Tonne

Spider

## 3.2 Tonne Jekko Range



**Safety first.  
McLeod first.**

# 3.2

Tonne

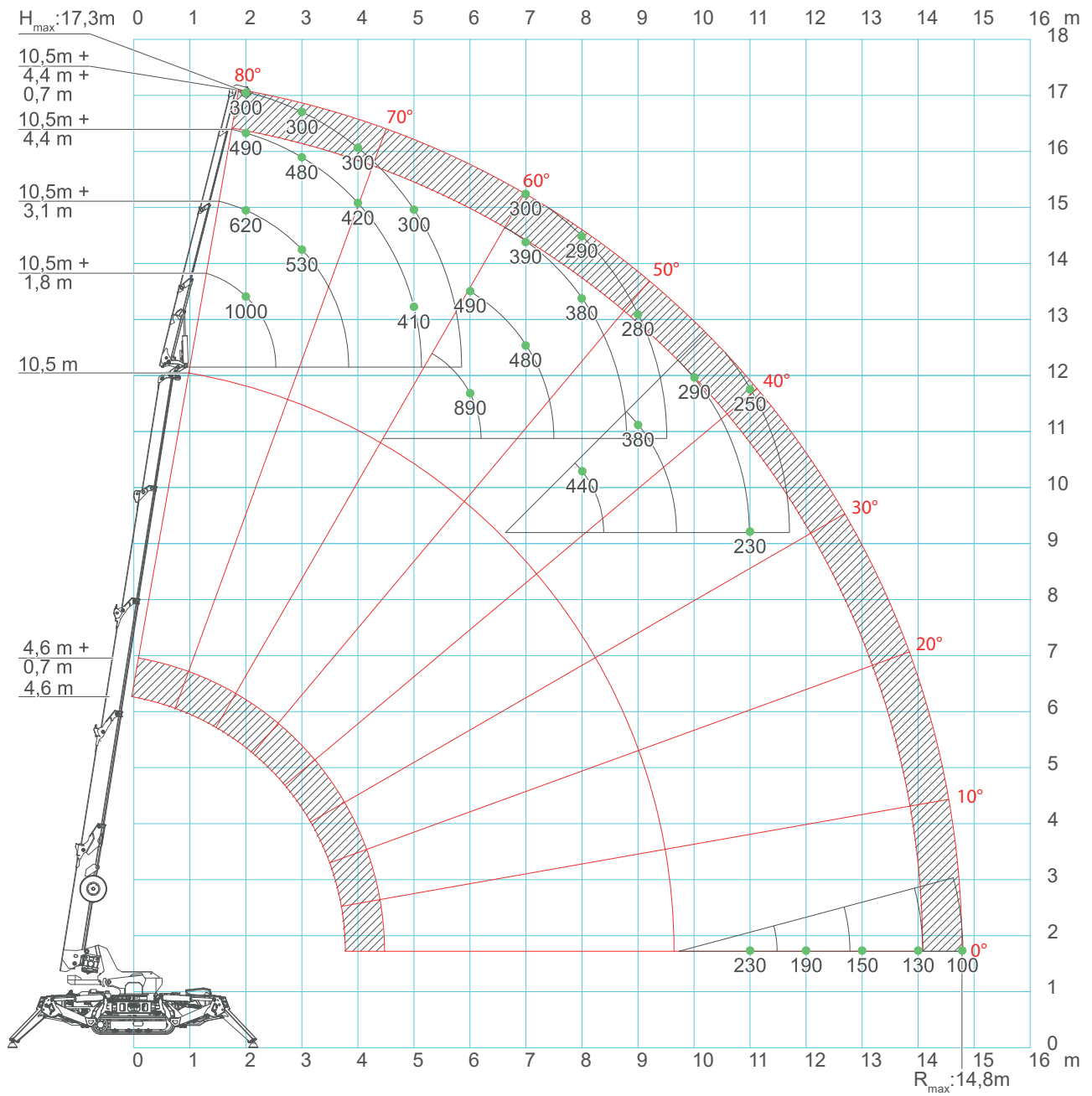
Spider

# 3.2

## Tonne

Spider

### 3.2 Tonne Jekko + Jib Range



**Safety first.**  
**McLeod first.**

# 3.2

## Tonne

Spider