

# 34

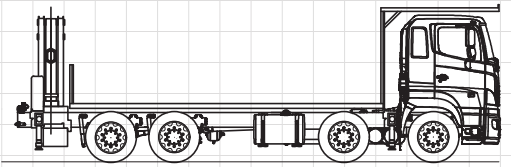
Tonne/Metre

8x4 Hino  
700



# MCLEOD

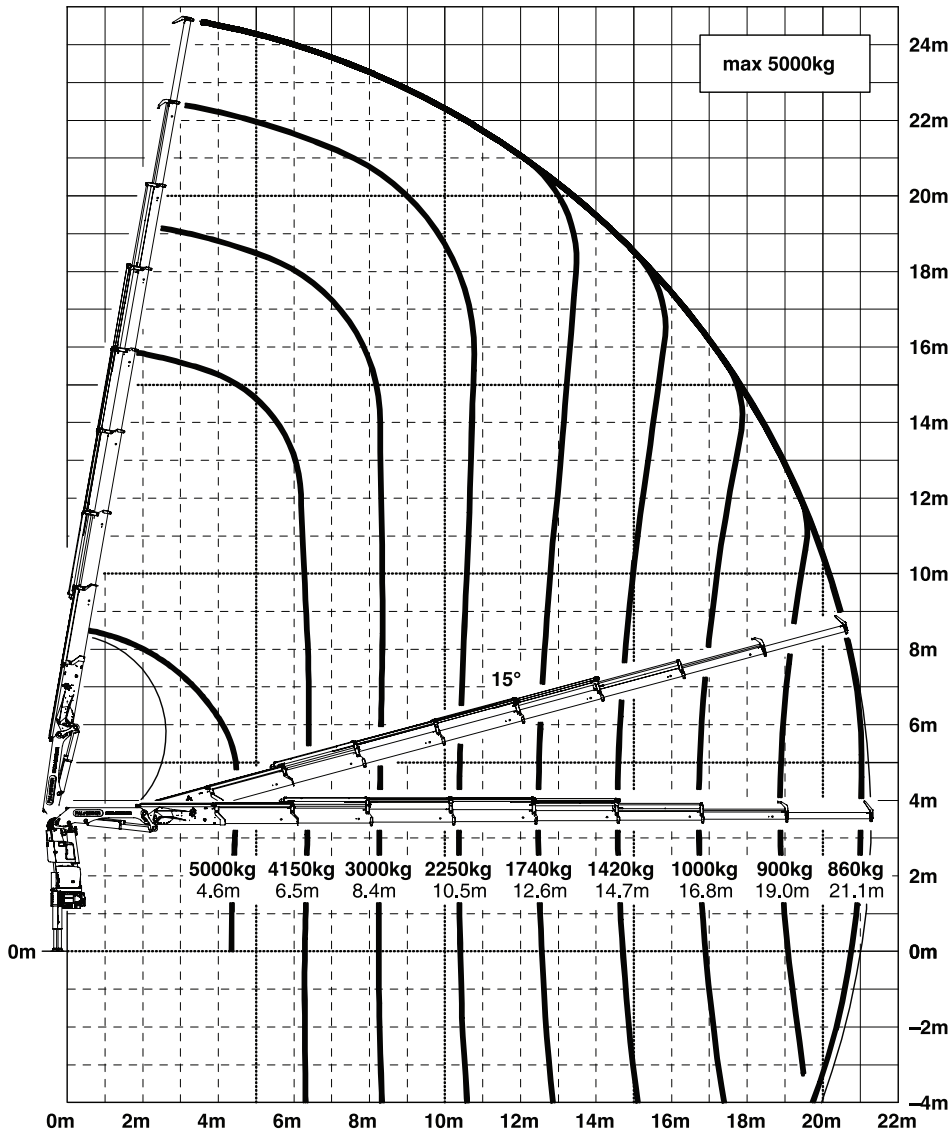
CRANES | HIABS | TRANSPORT  
DRILLING RIG LOGISTICS  
LIFT ENGINEERING & CONSULTANCY



### Palfinger PK34.002 SH G

<b>Platform:</b>	Hino 700	<b>Maximum Lift:</b>	5000 Kg @ 4.0m
<b>Deck Length:</b>	6.3m	<b>Maximum reach (hydraulic):</b>	1000 Kg @ 17m 860 Kg @ 21m
<b>Maximum Payload:</b>	7500 Kg		
<b>Maximum load length:</b>	6.3m (14m Truss Racks)		
<b>Maximum load height:</b>	3.2m		

## Palfinger Crane Load Chart



The charts that have been included have been reproduced from manufacturer specifications, and while every effort has been made to ensure their accuracy, we do not accept any responsibility for errors or omissions.

# 34

Tonne/Metre

8x4 Hino  
700