

20

Tonne

City Crane



MCLEOD

CRANES | HIABS | TRANSPORT
DRILLING RIG LOGISTICS
LIFT ENGINEERING & CONSULTANCY

Kato CR200Rf

Lift Capacity: 20.0 Tonne
Boom Length: 28.0 m
Fly Length: 4.0-5.8 m

Main Hook Weight: 150 Kg
Aux Hook Weight: 60 Kg
Line Pull: 3.2 Tonne

20 Tonne Rating Chart

RATED LIFTING CAPACITY

Based on ISO 4305
Not exceed 75% of static tipping loads



6.5m — 28.0m Boom

Working radius (m)	(5.4m)						(4.8m)						(4.3m)						(3.2m)						(1.93m)						
	Outriggers fully extended (5.4m) - 360° full range						Outriggers intermediately extended (4.8m) - over side						Outriggers intermediately extended (4.3m) - over side						Outriggers intermediately extended (3.2m) - over side						Outriggers completely retracted (1.93m) - over side (H-type outrigger only)						
	6.5m Boom	10.95m Boom	15.4m Boom	19.6m Boom	23.8m Boom	28.0m Boom	6.5m Boom	10.95m Boom	15.4m Boom	19.6m Boom	23.8m Boom	28.0m Boom	6.5m Boom	10.95m Boom	15.4m Boom	19.6m Boom	23.8m Boom	28.0m Boom	6.5m Boom	10.95m Boom	15.4m Boom	19.6m Boom	23.8m Boom	28.0m Boom	6.5m Boom	10.95m Boom	15.4m Boom	19.6m Boom	23.8m Boom	28.0m Boom	
2.5	20.00*	12.50	10.00	7.50			20.00*	12.50	10.00	7.50			17.45	12.50	10.00	7.50			14.55	12.50	10.00	7.50			5.80	5.65	5.25	5.20			
3.0	18.50*	12.50	10.00	7.50			18.00*	12.50	10.00	7.50			17.45	12.50	10.00	7.50			14.55	12.50	10.00	7.50			5.80	5.65	5.25	5.20			
3.5	16.20	12.50	10.00	7.50	6.00	5.00	16.00	12.50	10.00	7.50	6.00	5.00	15.00	12.50	10.00	7.50	6.00	5.00	10.40	10.20	9.55	7.50	6.00	5.00	4.35	4.20	4.10	4.15	4.05	3.90	
4.0	14.00	12.50	10.00	7.50	6.00	5.00	14.00	12.50	10.00	7.50	6.00	5.00	13.00	12.50	10.00	7.50	6.00	5.00	7.95	7.75	7.70	7.50	6.00	5.00	3.40	3.25	3.20	3.55	3.35	3.30	
4.5	12.00	12.00	10.00	7.50	6.00	5.00	12.00	12.00	10.00	7.50	6.00	5.00	11.15	10.95	10.00	7.50	6.00	5.00	6.30	6.15	6.10	6.30	6.00	5.00	2.70	2.55	2.50	2.85	2.80	2.75	
5.0		11.05	10.00	7.50	6.00	5.00		10.90	10.00	7.50	6.00	5.00		8.75	8.70	7.50	6.00	5.00		5.00	4.95	5.30	5.25	5.00		2.00	2.00	2.30	2.35	2.35	
5.5		10.20	9.30	7.50	6.00	5.00		8.85	8.80	7.50	6.00	5.00		7.20	7.15	7.50	6.00	5.00		4.10	4.05	4.45	4.55	4.50		1.60	1.55	1.85	1.95	2.00	
6.0		9.30	8.55	7.50	6.00	5.00		7.40	7.35	7.50	6.00	5.00		6.05	6.00	6.40	6.00	5.00		3.45	3.40	3.75	3.95	3.95		1.25	1.20	1.55	1.65	1.70	
6.5		7.85	7.80	7.10	5.75	5.00		6.30	6.25	6.65	5.75	5.00		5.15	5.10	5.45	5.70	5.00		2.95	2.90	3.20	3.40	3.50		0.95	0.90	1.25	1.35	1.45	
7.0		6.75	6.70	6.55	5.40	4.65		5.40	5.35	5.75	5.40	4.65		4.45	4.35	4.75	4.95	4.65		2.50	2.45	2.75	2.95	3.10		0.70		1.00	1.15	1.20	
8.0		5.15	5.10	5.45	4.75	4.05		4.15	4.05	4.45	4.65	4.05		3.35	3.30	3.65	3.85	4.00		1.80	1.75	2.10	2.30	2.40							
9.0		4.05	4.00	4.35	4.25	3.60		3.25	3.15	3.50	3.75	3.60		2.60	2.50	2.90	3.10	3.25		1.30	1.20	1.55	1.75	1.90							
10.0			3.20	3.55	3.75	3.20			2.45	2.85	3.05	3.20			1.90	2.30	2.50	2.65			0.80	1.15	1.35	1.50							
11.0			2.55	2.90	3.10	2.90			1.95	2.30	2.50	2.65			1.45	1.80	2.00	2.15			0.50	0.80	1.00	1.15							
12.0			2.05	2.40	2.60	2.65			1.50	1.85	2.05	2.20			1.10	1.45	1.65	1.80				0.55	0.75	0.90							
13.0			1.65	2.00	2.20	2.35			1.15	1.50	1.70	1.85			0.80	1.10	1.30	1.45				0.35	0.55	0.70							
14.0			1.45 (13.5m)	1.65	1.85	2.00			1.00 (13.5m)	1.20	1.40	1.55			0.65 (13.5m)	0.85	1.05	1.20				0.35	0.50								
15.0				1.35	1.55	1.70				0.95	1.15	1.30				0.65	0.85	1.00					0.35								
16.0				1.10	1.30	1.45				0.75	0.95	1.10				0.45	0.65	0.80													
17.0				0.90	1.10	1.25				0.60	0.75	0.90				0.30	0.50	0.65													
18.0				0.80 (17.5m)	0.90	1.05				0.50 (17.5m)	0.60	0.75					0.35	0.50													
19.0					0.75	0.90					0.45	0.60					0.35	0.50													
20.0					0.60	0.75						0.35	0.50																		
21.0					0.50	0.60						0.35	0.50																		
22.0					0.45 (21.5m)	0.50																									
23.0						0.40																									
24.5						0.30																									
Critical boom angle	—	—	—	—	—	18°	—	—	—	—	22°	35°	—	—	—	12°	33°	42°	—	—	—	33°	41°	50°	56°	—	36°	59°	64°	69°	72°
Standard hook	for 20 ton						for 20 ton						for 20 ton						for 20 ton						for 20 ton						
Hook mass	150kg						150kg						150kg						150kg						150kg						
Parts of line	7*6	6		4			7*6	6		4			7*6	6		4			6		4			6		4					

(Unit: Metric ton)



The charts that have been included have been reproduced from manufacturer specifications, and while every effort has been made to ensure their accuracy, we do not accept any responsibility for errors or omissions.

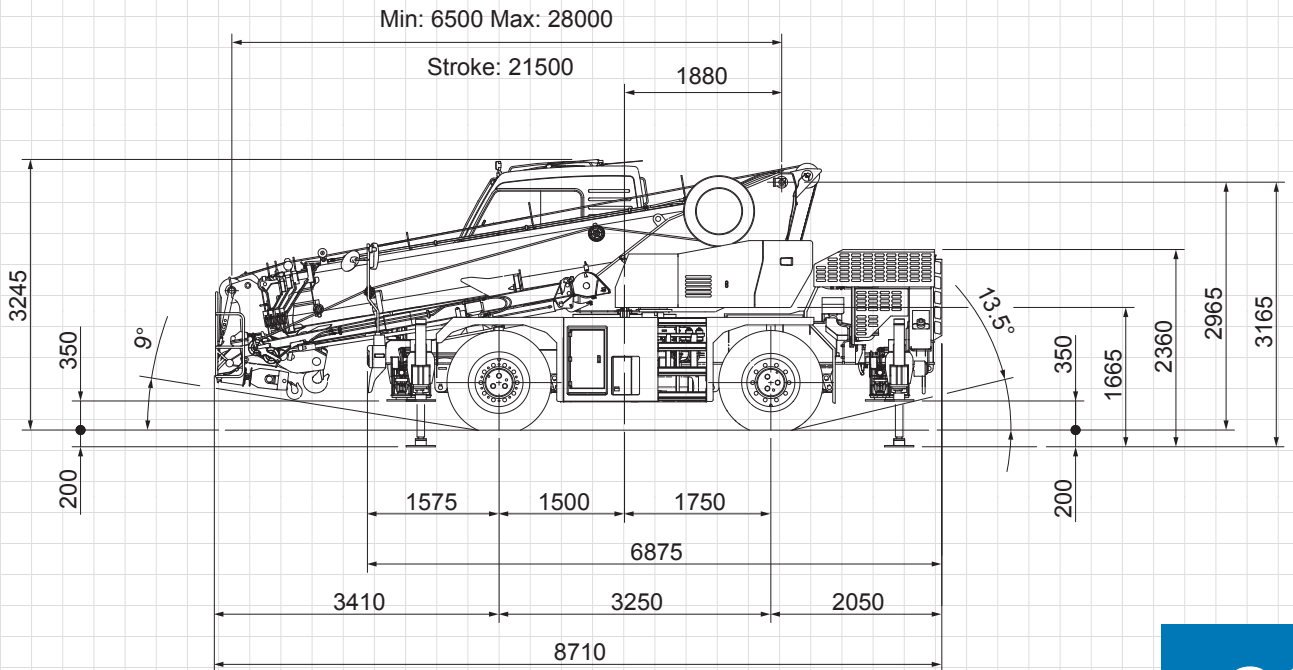
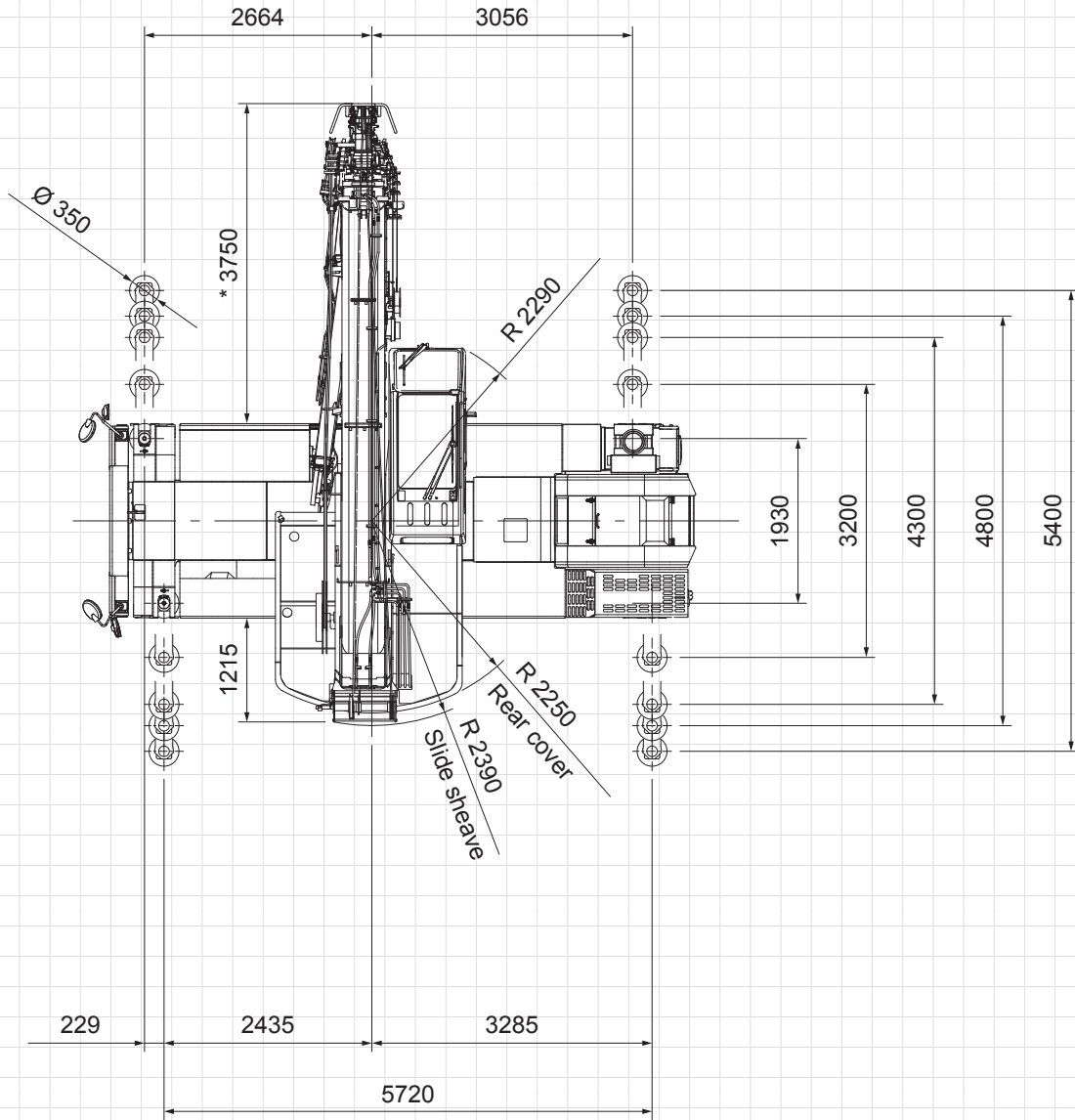
20 Tonne

City Crane

20 Tonne

City Crane

20 Tonne Dimensions



**Safety first.
McLeod first.**

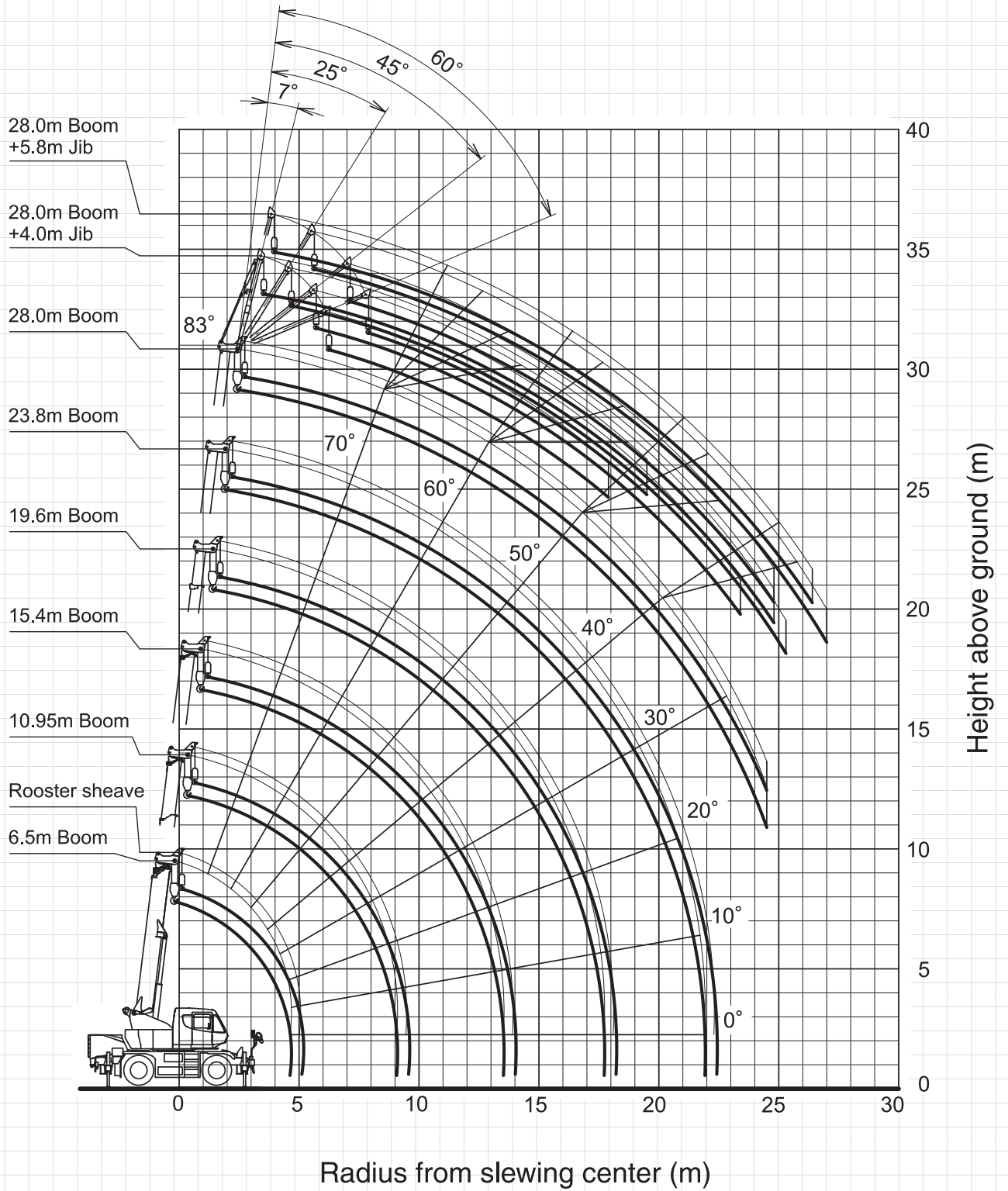
20 Tonne

City Crane

20
Tonne

City Crane

20 Tonne Working Range



**Safety first.
McLeod first.**

20
Tonne

City Crane