

23

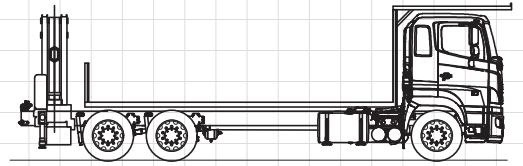
Tonne/Metre

6x4 Hino
500



MCLEOD

CRANES | HIABS | TRANSPORT
DRILLING RIG LOGISTICS
LIFT ENGINEERING & CONSULTANCY

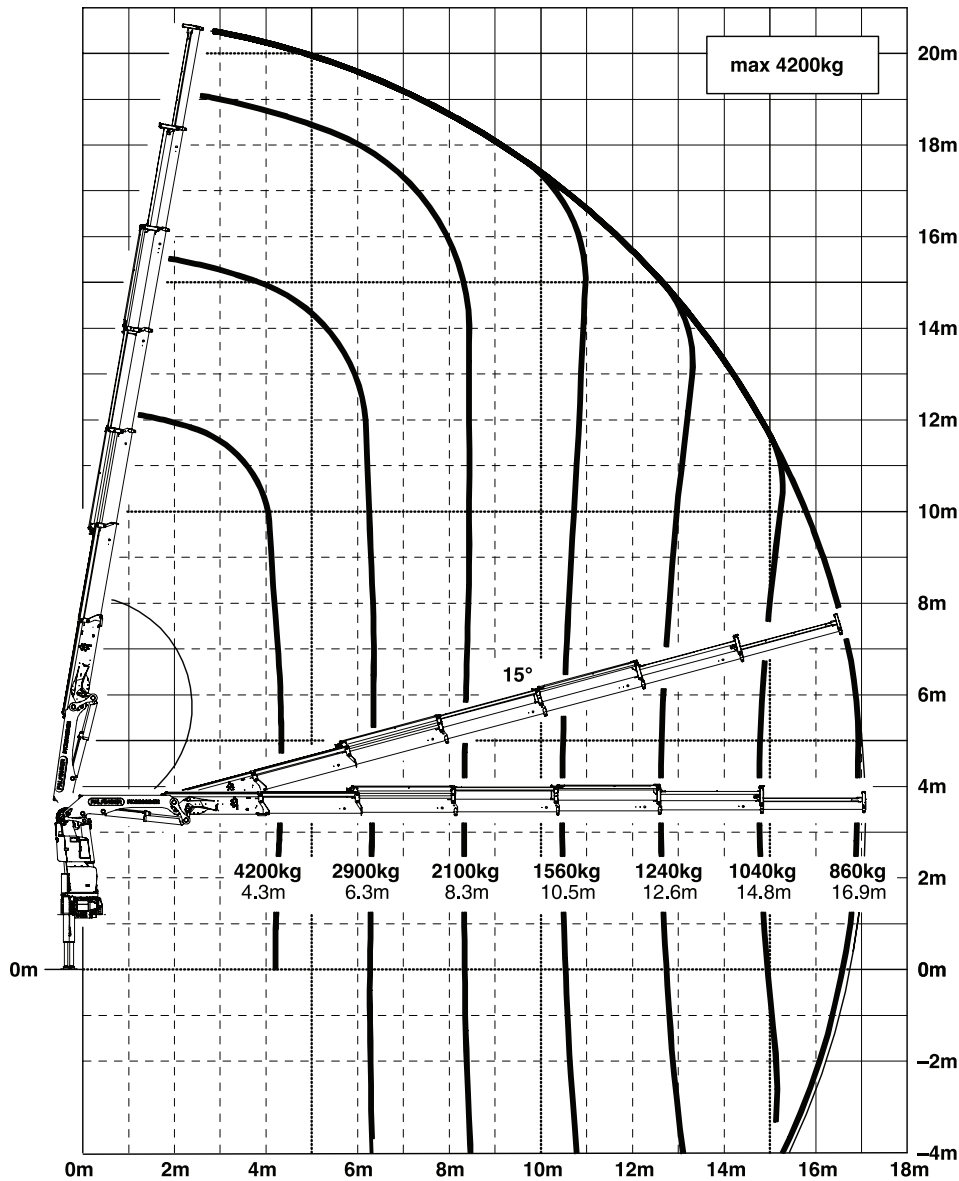


Palfinger PK23.002 SH

Platform: Hino 500
Deck Length: 6.5m
Maximum Payload: 7900 Kg
Maximum load length: 6.5m (14m Truss Racks)
Maximum load height: 3.2m

Maximum Lift: 4200 Kg @ 4.2m
Maximum reach (hydraulic): 830 Kg @ 17m

Palfinger Crane Load Chart



The charts that have been included have been reproduced from manufacturer specifications, and while every effort has been made to ensure their accuracy, we do not accept any responsibility for errors or omissions.

23

Tonne/Metre

6x4 Hino
500