

# 60 Tonne

Truck Crane



# MCLEOD

CRANES | HIABS | TRANSPORT  
DRILLING RIG LOGISTICS  
LIFT ENGINEERING & CONSULTANCY

Tadano GT600ex

**Lift Capacity:** 60.0 Tonne  
**Boom Length:** 43.0 m  
**Fly Length:** 8.8-15.2 m

**Main Hook Weight:** 570 Kg  
**Aux Hook Weight:** 150 Kg  
**Line Pull:** 5.6 Tonne

## 60 Tonne Rating Chart

UNIT: x1,000kg CLASS OF CRANE ; C3

Outriggers fully extended (6.8m)																				
A	11.0		15.0		19.0		27.0		35.0		39.0		43.0							
	B	C	C	C	C	C	C	C	C	C	C	C	C							
3.0	70	60.0	76	60.0	79	32.0	79	22.0												
3.5	67	47.5	74	47.5	78	32.0	78	22.0												
4.0	64	42.4	72	42.4	76	32.0	76	22.0	81	22.0	81	17.0								
4.5	61	38.1	70	38.1	75	32.0	75	22.0	80	22.0	80	17.0								
5.0	58	34.5	68	34.5	73	32.0	73	22.0	79	22.0	79	17.0								
5.5	55	31.4	66	31.4	72	30.9	71	21.4	78	21.3	78	17.0								
6.0	51	28.7	63	28.7	70	27.4	70	20.6	77	20.7	77	17.0	80	14.0	81	12.0				
6.5	47	26.4	61	26.4	68	24.0	68	19.8	76	20.0	76	16.3	80	14.0	80	12.0				
7.0	43	24.4	59	24.4	67	21.1	66	19.1	75	19.5	75	15.4	79	14.0	79	11.9	80	10.0		
7.5	39	22.7	57	22.7	65	18.8	65	18.5	74	18.8	73	14.6	78	13.5	78	11.5	80	10.0		
8.0	34	20.0	54	20.0	63	16.9	63	17.9	72	17.1	72	13.9	77	13.0	77	11.1	79	10.0	80	8.5
9.0	20	15.7	49	15.7	60	13.9	60	16.8	70	14.3	70	12.6	76	12.1	76	10.3	78	10.0	79	8.5
10.0			43		56	11.6	56	14.7	68	12.2	68	11.6	74	11.7	74	9.7	76	9.7	78	8.5
11.0			36		52	9.5	52	12.4	65	10.5	65	10.7	72	10.2	72	9.0	75	9.2	77	8.5
12.0			28		47	7.9	48	10.6	63	9.2	63	9.9	70	9.0	71	8.4	73	8.7	76	8.1
14.0					37	5.5	38	7.9	58	6.9	58	8.3	67	7.1	67	7.3	70	7.5	73	6.9
16.0					24	3.8	25	6.2	52	5.2	52	6.5	63	5.6	63	6.4	67	6.1	70	5.5
18.0									46	3.9	46	5.2	59	4.4	59	5.4	63	5.0	66	4.4
20.0									39	3.0	40	4.2	55	3.5	55	4.4	60	4.0	63	3.6
22.0									31	2.2	32	3.5	50	2.7	51	3.6	56	3.2	60	2.9
24.0									20	1.6	22	2.9	46	2.1	46	3.0	52	2.6	57	2.3
26.0													41	1.6	41	2.5	48	2.1	53	1.8
28.0													35	1.2	35	2.1	43	1.7	50	1.4
30.0													28	0.8	28	1.7	39	1.3	46	1.0
32.0													18	0.5	18	1.4	33	1.0	42	0.7
34.0																	26	0.8	37	0.5
36.0																	17	0.6		
D					0°				18°				0°		17°		37°			
Telescoping conditions(%)																				
Telescoping Mode	I, II	I	I	II	I	II	I	II	I	II	II	I, II								
2nd boom	0	50	100	0	100	0	100	0	100	0	50	100								
3rd boom	0	0	0	33	33	66	66	100	100	100	100	100								
4th boom	0	0	0	33	33	66	66	100	100	100	100	100								
Top boom	0	0	0	33	33	66	66	100	100	100	100	100								

- A: Boom length (m)
- B: Load radius (m)
- C: Loaded boom angle (°)
- D: Minimum boom angle (°) for indicated length (no load)



The charts that have been included have been reproduced from manufacturer specifications, and while every effort has been made to ensure their accuracy, we do not accept any responsibility for errors or omissions.

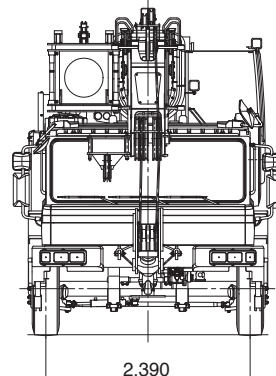
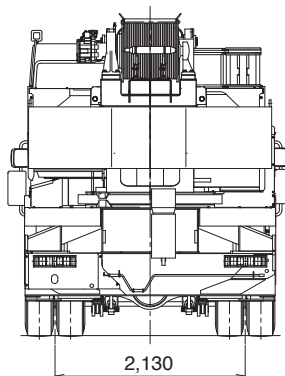
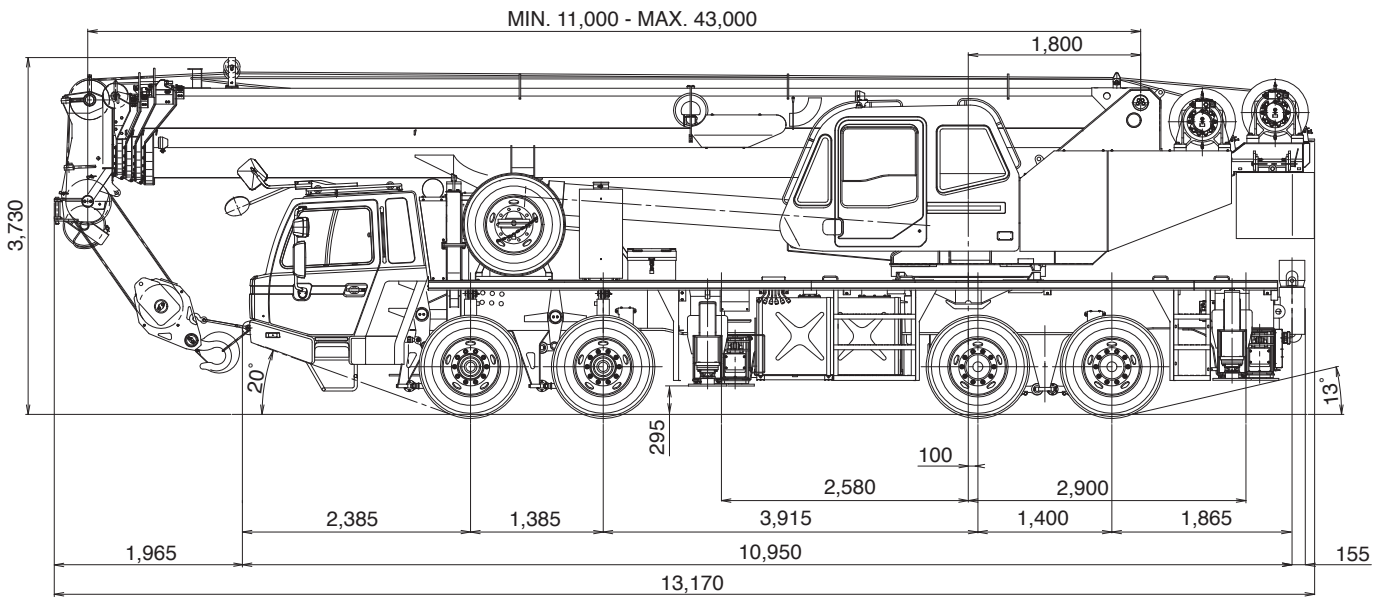
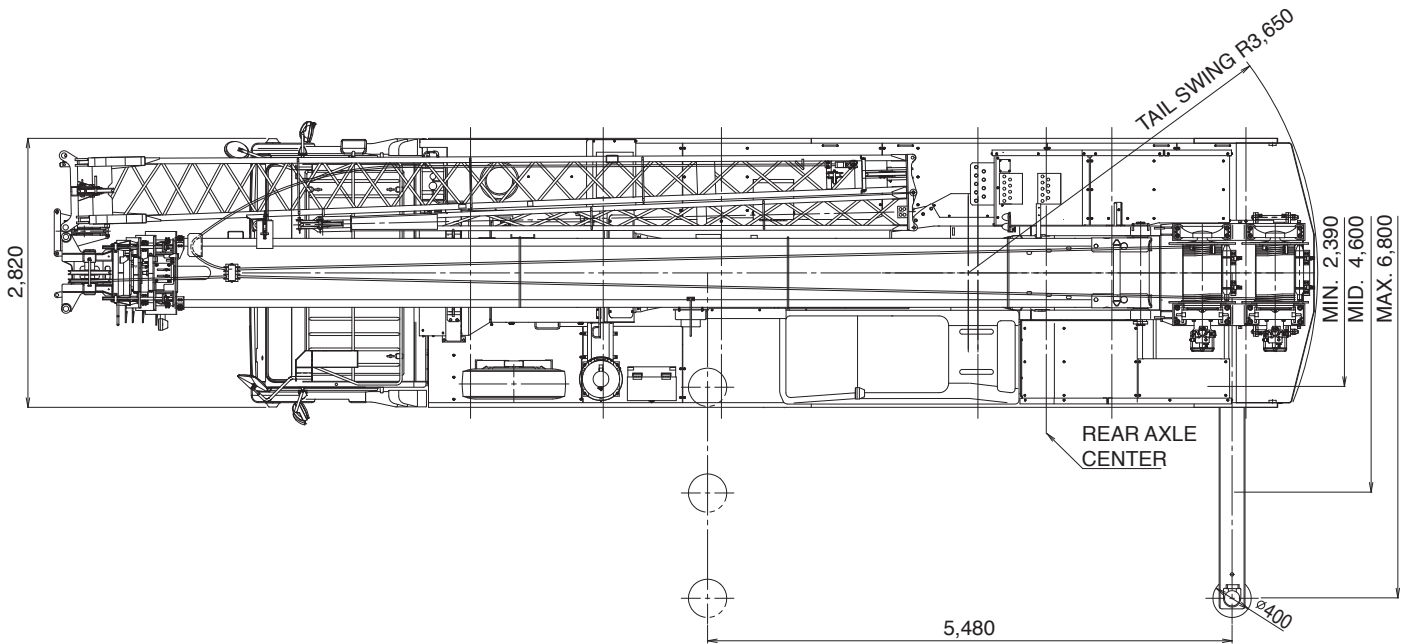
# 60 Tonne

Truck Crane

60  
Tonne

Truck Crane

## 60 Tonne Dimensions



**Safety first.  
McLeod first.**

60  
Tonne

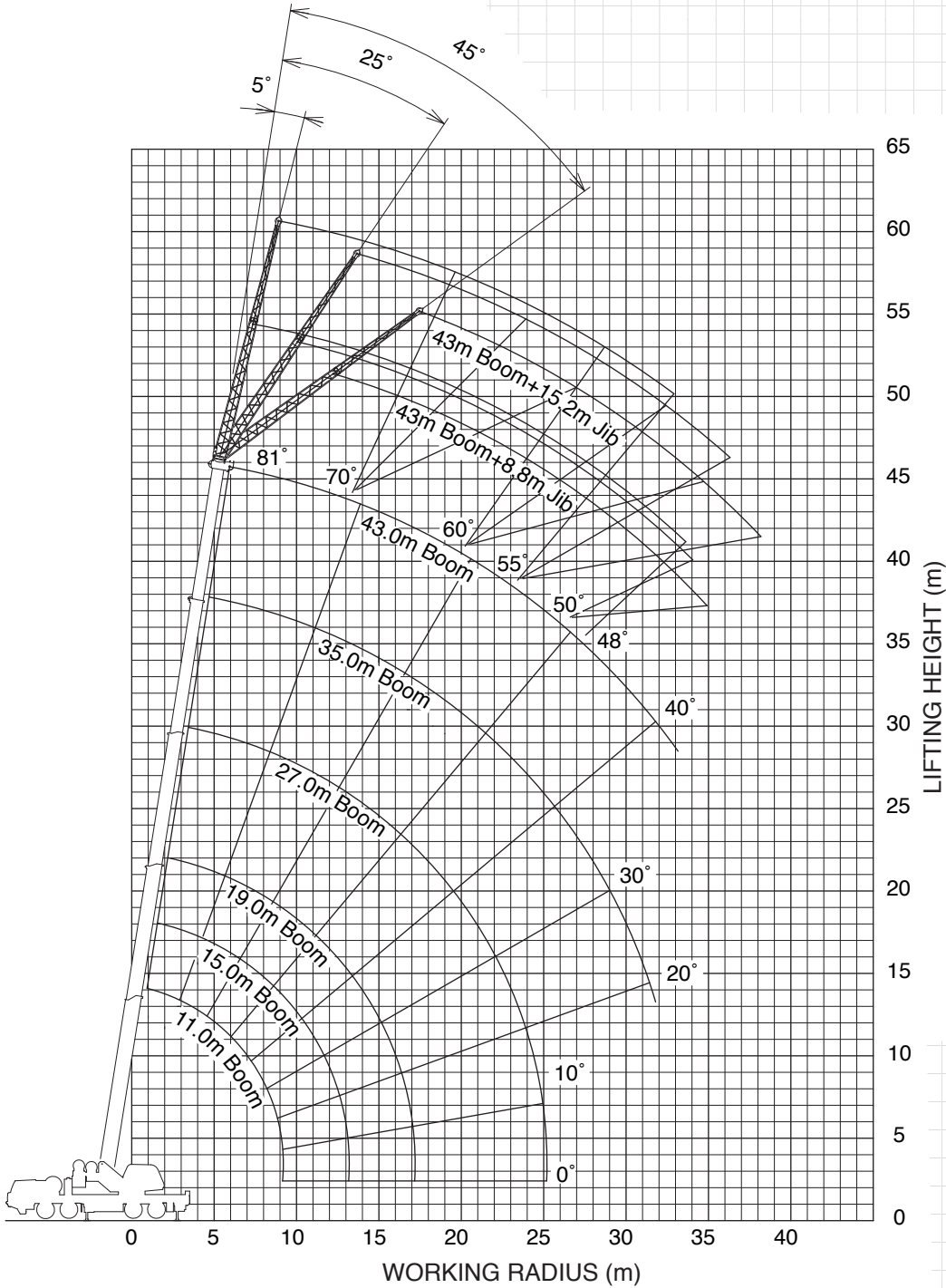
Truck Crane

# 60

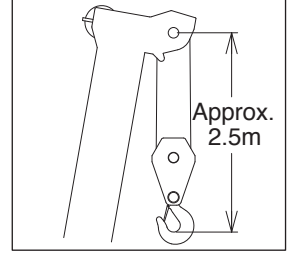
## Tonne

Truck Crane

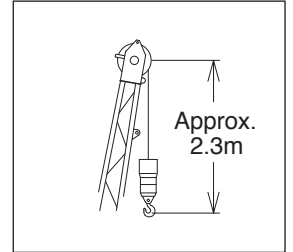
### 60 Tonne Working Range



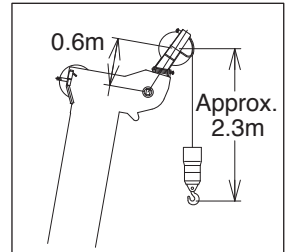
#### BOOM



#### JIB



#### SINGLE TOP



**NOTE:**

Boom and jib geometry shown are for unloaded condition and machine standing level on firm supporting surface. Boom deflection and subsequent radius and boom angle change must be accounted for when applying load to hook.



# 60

## Tonne

Truck Crane