

80 Tonne

All Terrain



MCLEOD

CRANES | HIABS | TRANSPORT
DRILLING RIG LOGISTICS
LIFT ENGINEERING & CONSULTANCY

Grove GMK4075

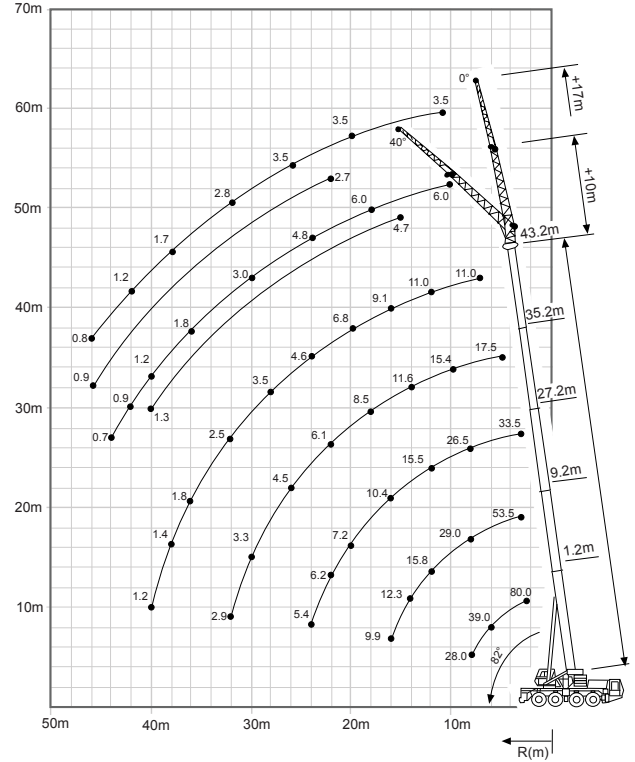
Lift Capacity: 80.0 Tonne
Boom Length: 43.2 m
Fly Jib Length: 10.0 m - 17.0 m

Main Hook Weight: 450 Kg
Aux Hook Weight: 200 Kg
Line Pull: 5.1 Tonne

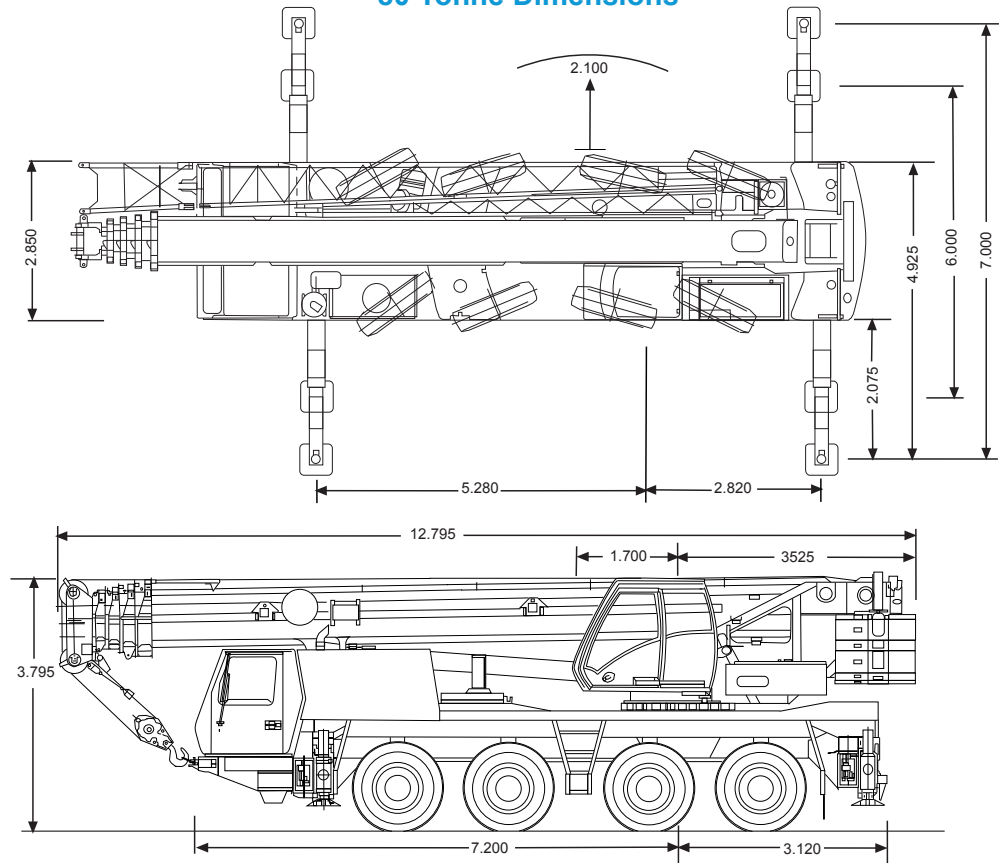
80 Tonne Rating Chart

m	11.2	15.2	19.2	23.2	27.2	31.2	35.2	39.2	43.2
2.5	80								
3.0	68.0	56.5	53.5	50.5	33.5				
4.0	52.0	49.0	46.0	44.0	33.5	24.5			
5.0	45.0	43.5	41.0	38.5	33.5	24.5	17.5		
6.0	39.0	38.5	37.0	34.5	33.5	23.5	17.5	14.0	
7.0	33.5	34.0	33.5	31.0	30.5	22.0	17.5	14.0	11.0
8.0	27.5	28.5	28.0	27.0	25.5	20.5	17.5	14.0	11.0
9.0		23.5	24.0	23.5	22.0	19.0	16.5	14.0	11.0
10.0		20.0	20.5	20.5	19.2	17.8	15.4	13.7	11.0
11.0		17.1	17.6	17.5	17.0	16.8	14.4	12.9	11.0
12.0		14.8	15.3	15.2	14.9	15.1	13.4	12.2	11.0
13.0		13.4	13.4	13.8	13.6	12.3	11.6	10.6	
14.0		11.9	11.9	12.4	12.1	11.6	11.0	10.1	
15.0		10.7	11.0	11.1	10.8	11.0	10.0	9.5	
16.0			9.6	10.1	10.0	9.7	9.9	9.3	9.1
18.0				8.4	8.3	8.4	8.1	8.1	7.8
20.0				7.0	7.0	7.1	6.9	6.8	6.5
22.0					6.0	6.0	5.8	5.7	5.4
24.0						5.1	5.0	4.9	4.6
26.0							4.4	4.2	4.1
28.0								3.8	3.7
30.0									3.1
32.0									2.7
34.0									2.2
36.0									1.9
38.0									1.3
40.0									1.0

80 Tonne Working Range



80 Tonne Dimensions



**Think safety.
Think McLeod.**

McLEOD

The charts that have been included have been reproduced from manufacturer specifications, and while every effort has been made to ensure their accuracy, we do not accept any responsibility for errors or omissions.