



MCLEOD

CRANES | HIABS | TRANSPORT
DRILLING RIG LOGISTICS
LIFT ENGINEERING & CONSULTANCY

100 Tonne

All Terrain

Grove GMK5130 / 100t

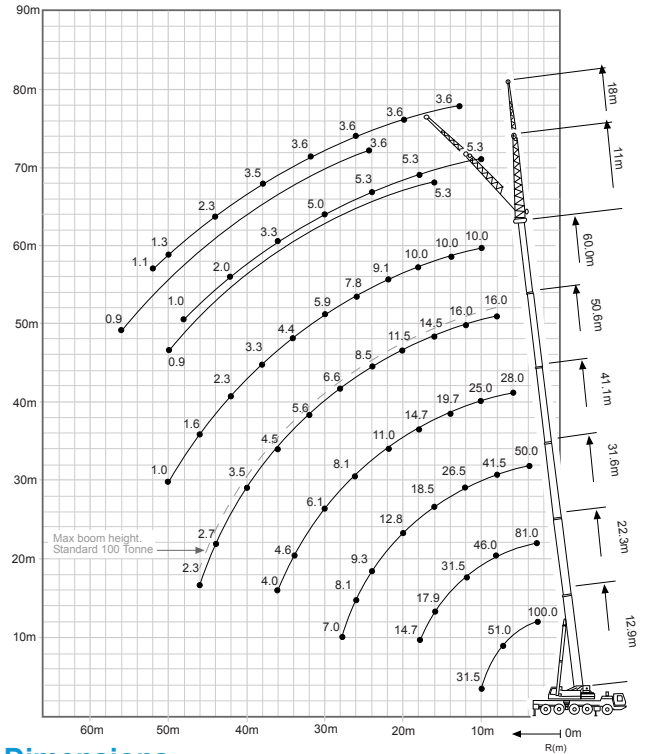
Lift Capacity: 100.0 Tonne
Boom Length: 60.0 m
Fly Jib Length: 11.0 m - 18.0 m

Main Hook Weight: 675 Kg
Aux Hook Weight: 200 Kg
Line Pull: 7.1 Tonne

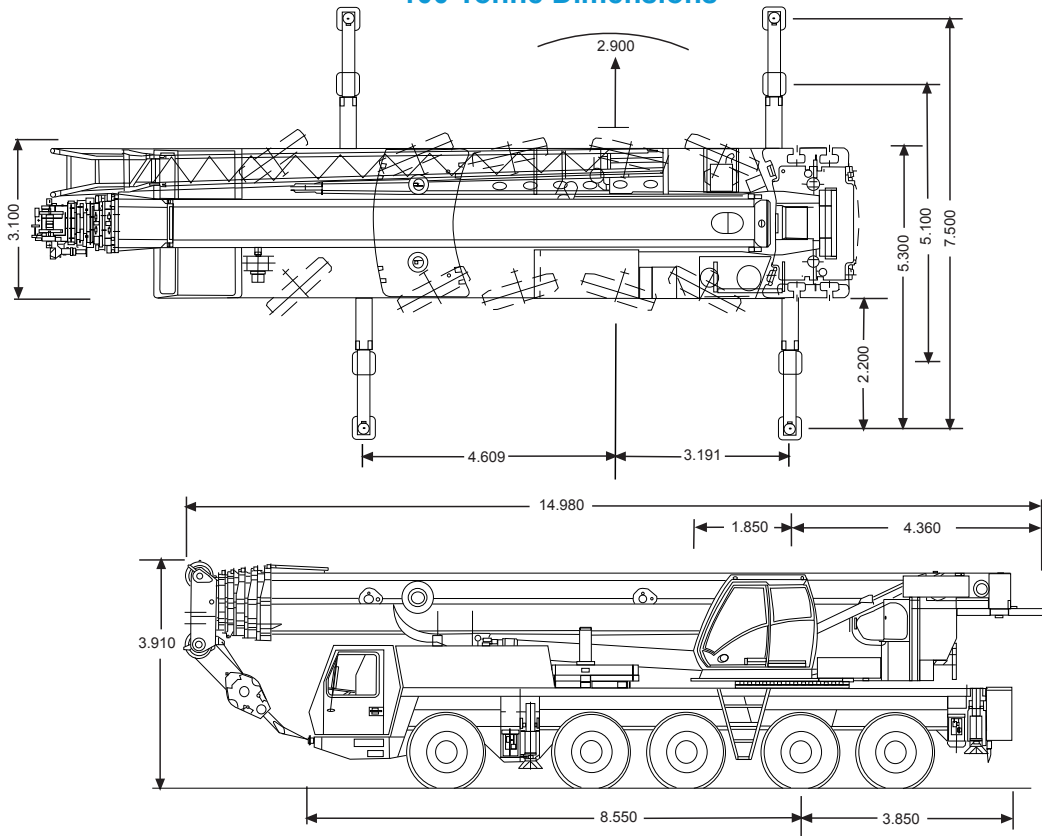
100 Tonne Rating Chart

m	12.9	17.6	22.3	27.0	31.6	36.3	41.1	45.8	50.6	55.3	60.0
2.5	100.0										
3.0	92.5	86.0	81.0	65.0							
4.0	78.0	76.5	71.0	65.0	50.0						
5.0	67.0	66.0	63.5	60.5	49.5	38.0					
6.0	58.0	58.5	57.5	54.5	47.0	37.0	28.0	20.5			
7.0	51.0	51.5	51.5	50.0	44.0	35.0	28.0	20.5	16.0		
8.0	45.5	46.0	45.5	45.0	41.5	33.0	28.0	20.5	16.0	11.6	
9.0	40.5	41.0	41.0	39.0	38.5	31.5	26.5	20.5	16.0	11.6	10.0
10.0	31.5	37.0	36.5	34.0	33.5	29.5	25.0	20.5	16.0	11.6	10.0
11.0		32.0	31.5	31.5	29.5	28.0	23.5	20.5	16.0	11.6	10.0
12.0		28.0	27.5	28.0	26.5	26.5	22.5	19.5	16.0	11.6	10.0
13.0		24.5	24.0	25.0	23.5	23.5	21.0	18.6	16.0	11.6	10.0
14.0		21.5	22.0	22.0	22.0	21.5	19.7	17.7	15.8	11.6	10.0
15.0		19.9	19.6	20.5	19.6	18.3	16.8	15.2	11.6	10.0	
16.0		17.9	17.6	18.5	17.9	16.8	15.9	14.5	11.6	10.0	
18.0		14.7	14.4	15.3	14.7	14.7	13.7	13.0	11.6	10.0	
20.0			12.0	12.8	12.2	12.9	11.6	11.5	11.1	9.7	
22.0			10.1	10.9	11.3	11.0	9.9	9.9	10.0	9.1	
24.0				7.4	9.3	9.9	9.4	9.2	8.5	8.7	8.6
26.0					8.1	8.6	8.1	8.4	7.3	7.7	7.8
28.0					7.0	7.5	7.0	7.3	6.6	7.0	6.8
30.0						6.6	6.1	6.4	5.9	6.3	5.9
32.0							5.8	5.3	5.6	5.5	5.1
34.0								4.6	4.9	5.1	4.8
36.0									4.0	4.5	4.2
38.0										4.1	4.0
40.0											3.8
42.0											3.4
44.0											
46.0											
48.0											
50.0											
52.0											
54.0											
56.0											

100 Tonne Working Range



100 Tonne Dimensions



**Think safety.
Think McLeod.**

*130 setup as 100

The charts that have been included have been reproduced from manufacturer specifications, and while every effort has been made to ensure their accuracy, we do not accept any responsibility for errors or omissions.