



MCLEOD

CRANES | HIABS | TRANSPORT
DRILLING RIG LOGISTICS
LIFT ENGINEERING & CONSULTANCY

130 Tonne

All Terrain

Grove GMK5130

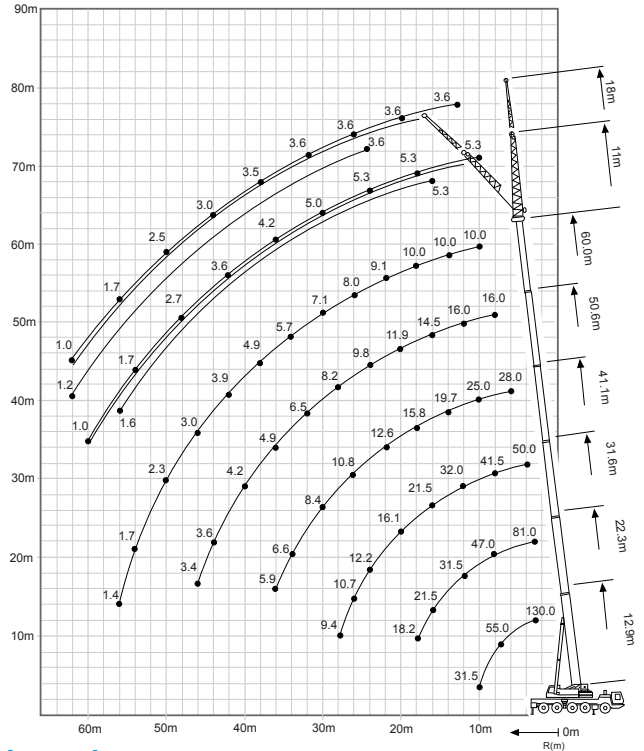
Lift Capacity: 130.0 Tonne
Boom Length: 60.0 m
Fly Jib Length: 11.0 m - 18.0 m

Main Hook Weight: 675 Kg
Aux Hook Weight: 200 Kg
Line Pull: 7.1 Tonne

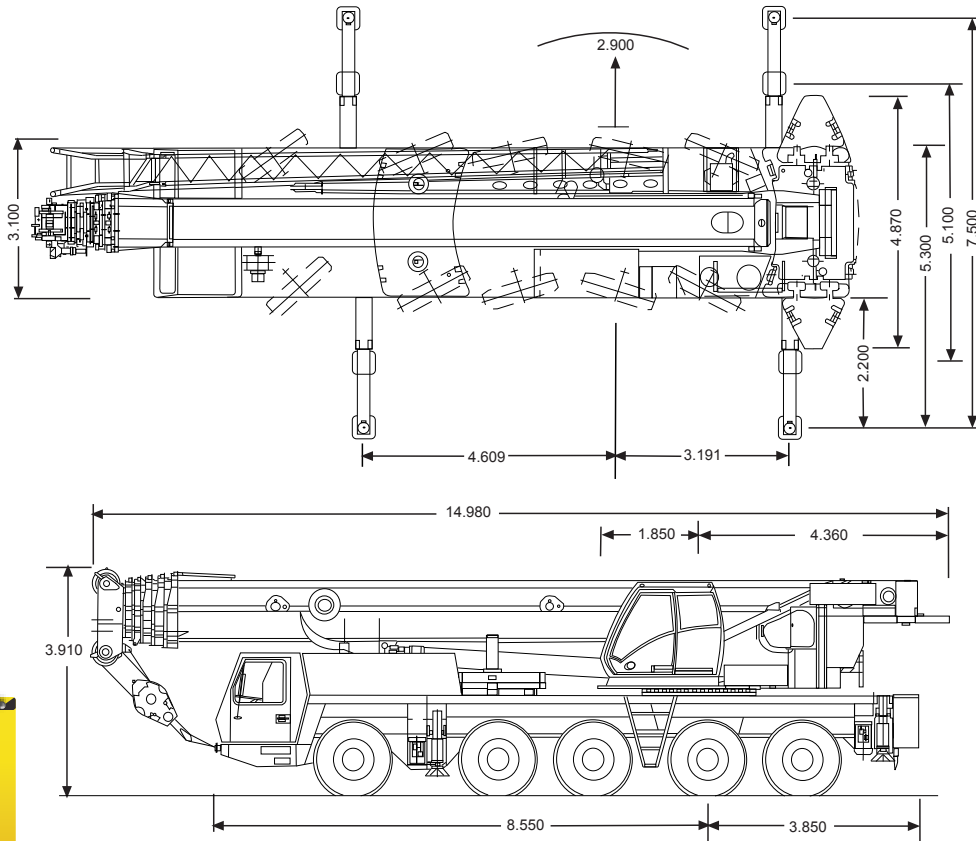
130 Tonne Rating Chart

m	12.9	17.6	22.3	27.0	31.6	36.3	41.1	45.8	50.6	55.3	60.0
2.5	130										
3.0	93.5	86.0	81.0	65.0							
4.0	79.0	76.5	71.0	65.0	50.0						
5.0	68.0	67.5	63.5	60.5	49.5	38.0					
6.0	59.5	60.0	57.5	54.5	47.0	37.0	28.0	20.5			
7.0	52.5	53.0	52.0	50.0	44.0	35.0	28.0	20.5	16.0		
8.0	46.5	47.0	47.0	46.0	41.5	33.0	28.0	20.5	16.0	11.6	
9.0	41.0	42.5	42.5	42.0	39.0	31.5	26.5	20.5	16.0	11.6	10.0
10.0	31.5	38.0	38.0	37.5	37.0	29.5	25.0	20.5	16.0	11.6	10.0
11.0		35.0	34.5	34.0	34.5	28.0	23.5	20.5	16.0	11.6	10.0
12.0		32.0	31.5	31.5	32.0	26.5	22.5	19.5	16.0	11.6	10.0
13.0		29.0	29.0	28.5	29.5	25.0	21.0	18.6	16.0	11.6	10.0
14.0		25.0	26.5	26.0	27.0	23.5	19.7	17.7	15.8	11.6	10.0
15.0		24.0	24.5	24.0	22.5	18.7	16.8	15.2	11.6	10.0	
16.0		21.5	22.5	21.5	21.5	17.6	14.4	14.5	11.6	10.0	
18.0		18.2	18.5	17.9	18.8	15.8	12.7	13.0	11.6	10.0	
20.0			15.6	16.1	15.8	13.9	11.5	11.9	11.1	9.7	
22.0			13.3	14.1	13.5	12.6	10.4	10.8	10.3	9.1	
24.0				9.6	12.2	11.7	11.6	9.5	9.8	8.4	8.6
26.0					10.7	10.1	10.8	8.4	8.9	8.6	8.0
28.0						9.4	9.3	9.5	7.5	8.2	7.9
30.0							8.7	8.4	6.9	7.4	7.3
32.0								8.0	7.4	6.2	6.5
34.0									6.6	5.9	5.7
36.0										5.5	4.9
38.0											4.5
40.0											4.4
42.0											3.9
44.0											3.6
46.0											3.4
48.0											3.1
50.0											2.7
52.0											2.0
54.0											1.7
56.0											1.4

130 Tonne Working Range



130 Tonne Dimensions



**Think safety.
Think McLeod.**

McLEOD

The charts that have been included have been reproduced from manufacturer specifications, and while every effort has been made to ensure their accuracy, we do not accept any responsibility for errors or omissions.